

# Performance Textiles



**camira**

# Blazer

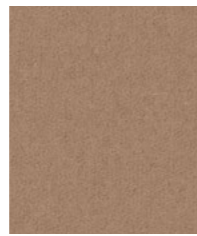
Order Samples/View full collection



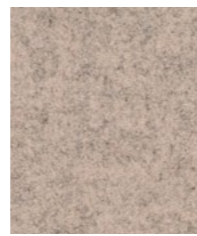
**Trevelyan**  
CUZ31



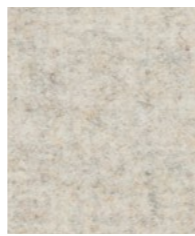
**Caterham**  
CUZ4A



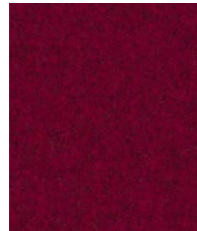
**Bristol**  
CUZ4X



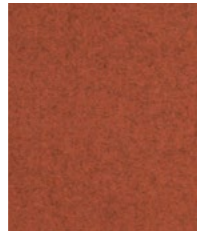
**St Andrews**  
CUZ86



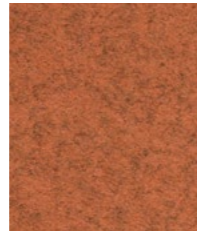
**Dartmouth**  
CUZ2Q



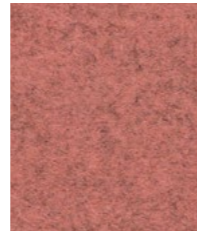
**Moreton**  
CUZ3W



**Uplands**  
CUZ4U



**Malvern**  
CUZ3L



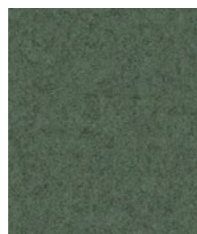
**Ackworth**  
CUZ3P



**Earlscliffe**  
CUZ3T



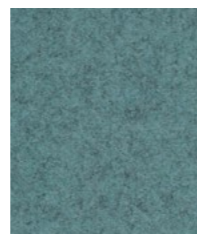
**Ambleside**  
CUZ4G



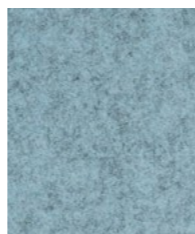
**Stowe**  
CUZ3R



**Moray**  
CUZ4K



**Latymer**  
CUZ33



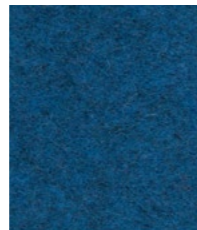
**Plymouth**  
CUZ1R



**Edinburgh**  
CUZ1Y



**Knightsbridge**  
CUZ26



**Newcastle**  
CUZ1W



**Brokenhurst**  
CUZ4B



**Norland**  
CUZ4J



**Glenalmond**  
CUZ62



**Tettenhall**  
CUZ3X



**Ellesmere**  
CUZ3Z



**Manchester**  
CUZ1V



**Perth**  
CUZ4H



**Winchester**  
CUZ12



**Silcoates**  
CUZ30



**Stonebridge**  
CUZ4W



**Surrey**  
CUZ1E



**Silverdale**  
CUZ28

Made from premium New Zealand lambswool, Blazer is a timeless wool felt fabric which embodies everything we do: we spin the yarn, weave the cloth, mill the fabric and dye it into our most extensive palette of 77 colorways.

Sustainable, natural, renewable.



Renewable  
Pure New Wool



Visit [www.camirafabrics.com](http://www.camirafabrics.com) to view the full range of colors available in each pattern. Photographic fabric scans are not color accurate. Always request actual fabric samples before ordering.



Era is a subtle, two tone polyester fabric containing stretch in both directions for ease of upholstery. The baby herringbone weave offers an understated contemporary texture while its coloring technique provides close up intrigue. The palette incorporates playful brights and sophisticated muted tones.

# Era

[Order samples/View full collection](#)

<b>Extent</b> CSE28	<b>Experience</b> CSE29	<b>Sequence</b> CSE25	<b>Splitsecond</b> CSE31	<b>Lifetime</b> CSE03
<b>Phase</b> CSE17	<b>Cycle</b> CSE06	<b>Turn</b> CSE26	<b>Date</b> CSE24	<b>Calendar</b> CSE19
<b>Stage</b> CSE15	<b>Range</b> CSE42	<b>Perennial</b> CSE12	<b>Chapter</b> CSE08	<b>Allowance</b> CSE38
<b>Signature</b> CSE35	<b>Event</b> CSE18	<b>Timelapse</b> CSE16	<b>Endurance</b> CSE34	<b>Notation</b> CSE36
<b>History</b> CSE21	<b>Generation</b> CSE02	<b>Occurrence</b> CSE23	<b>Prompt</b> CSE45	<b>Futurist</b> CSE01
<b>Forward</b> CSE14	<b>Present</b> CSE13	<b>Late</b> CSE43	<b>Quota</b> CSE41	<b>Memo</b> CSE46

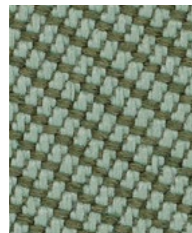
Visit [www.camirafabrics.com](http://www.camirafabrics.com) to view the full range of colors available in each pattern. Photographic fabric scans are not color accurate. Always request actual fabric samples before ordering.

# Oxygen

Order samples/View full collection



**Paddle**  
OOC13



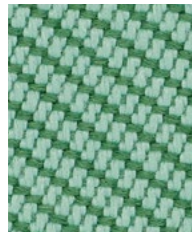
**Rockweed**  
OOC24



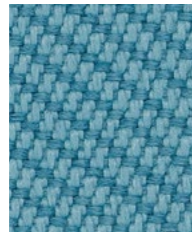
**Coast**  
OOC03



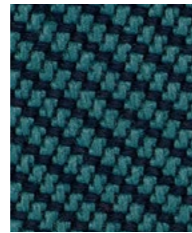
**Nori**  
OOC19



**Sea**  
OOC04



**Jetsam**  
OOC02



**Cove**  
OOC22



**Gulf**  
OOC15



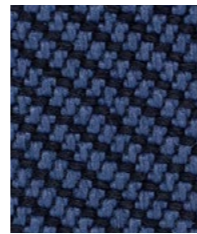
**Seaspray**  
OOC21



**Neptune**  
OOC11



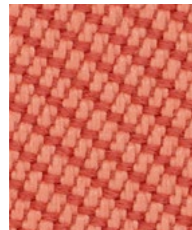
**Atoll**  
OOC06



**Tidal**  
OOC26



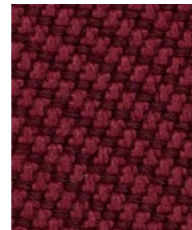
**Seafarer**  
OOC16



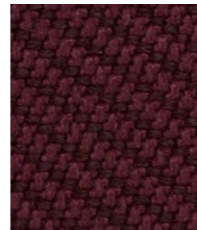
**Coral**  
OOC05



**Aquatic**  
OOC12



**Rosita**  
OOC29



**Clam**  
OOC18



**Scallop**  
OOC23



**Sandy**  
OOC28



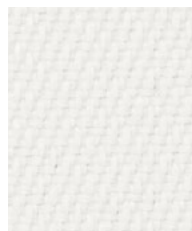
**Dune**  
OOC30



**Starfish**  
OOC27



**Buoy**  
OOC25



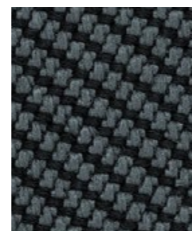
**Crest**  
OOC17



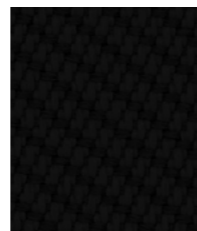
**Riptide**  
OOC14



**Bay**  
OOC08



**Gannet**  
OOC20



**Flotsam**  
OOC01



Oceanic is a fabric born of the SEAQUAL INITIATIVE designed to combat marine plastic pollution and achieve a waste free environment. It is created entirely from post-consumer recycled plastic - from plastic debris floating in our seas, used to make SEAQUAL® YARN, to bottles thrown away and destined for landfills. One small drop in the mission to clean both the earth and its ocean, this contemporary fabric is a recycled polyester with a purpose.



Visit [www.camirafabrics.com](http://www.camirafabrics.com) to view the full range of colors available in each pattern. Photographic fabric scans are not color accurate. Always request actual fabric samples before ordering.

Created with a conscience. Quest is a continuation of our partnership with the SEAQUAL INITIATIVE to combat marine plastic pollution. Waste made wonderful: this lightly textured fabric is woven entirely from post-consumer recycled plastic - transforming it into a fabric as fluid as the waves by which it was inspired, and which it seeks to save. With a hopsack weave enhanced by discat-dyed SEAQUAL® YARN, Quest brings a touch of the ocean's natural beauty to interiors.



# Quest

[Order Samples/View full collection](#)



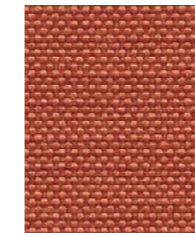
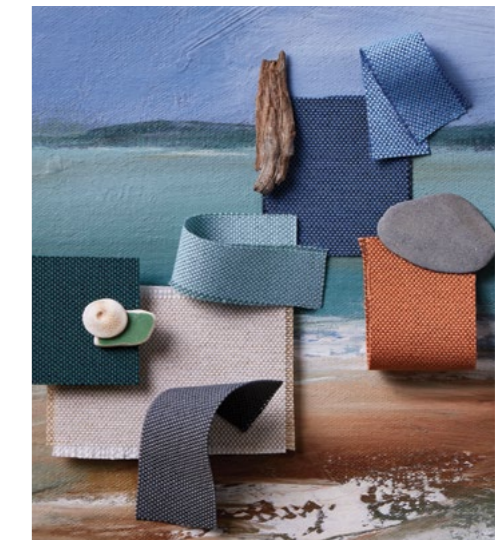
**Sandstone**  
QUE20



**Beach Comber**  
QUE21



**Salt**  
QUE22



**Crab**  
QUE24



**Clay**  
QUE25



**Shrimp**  
QUE26



**Kelp**  
QUE15



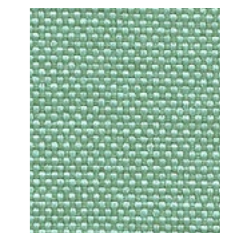
**Algae**  
QUE14



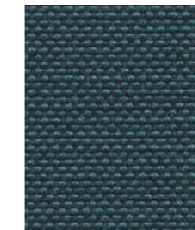
**Abalone**  
QUE18



**Sea Grass**  
QUE13



**Urchin**  
QUE17



**Whelk**  
QUE08



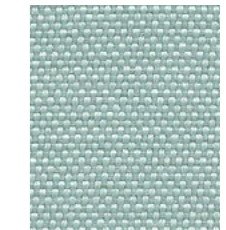
**Limpet**  
QUE09



**Wave**  
QUE11



**Tide**  
QUE12



**Ripple**  
QUE07



**Pebble**  
QUE27



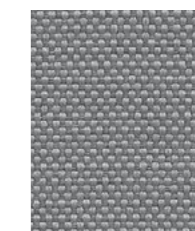
**Fossil**  
QUE02



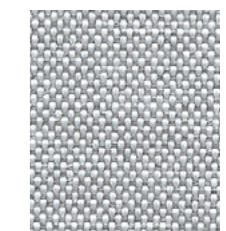
**Driftwood**  
QUE19



**Mussel**  
QUE04



**Shell**  
QUE06



**Barnacle**  
QUE03

Visit [www.camirafabrics.com](http://www.camirafabrics.com) to view the full range of colors available in each pattern. Photographic fabric scans are not color accurate. Always request actual fabric samples before ordering.

# RePlay Zero

Order Samples/View full collection

				
<b>Workout</b> ZER24	<b>Active</b> ZER23	<b>Game</b> ZER22	<b>Play</b> ZER20	<b>Pull</b> ZER15
				
<b>Move</b> ZER21	<b>Roll</b> ZER18	<b>Fun</b> ZER19	<b>Push</b> ZER16	<b>Lift</b> ZER17
				
<b>Freestyle</b> ZER11	<b>Handstand</b> ZER09	<b>Step</b> ZER10	<b>Motion</b> ZER12	<b>Joy</b> ZER07
				
<b>Athletic</b> ZER03	<b>Agile</b> ZER02	<b>Jog</b> ZER05	<b>Run</b> ZER04	<b>Flex</b> ZER01
				
<b>Twirl</b> ZER29	<b>Bounce</b> ZER26	<b>Hop</b> ZER14	<b>Jump</b> ZER25	<b>Skip</b> ZER13
				
<b>Climb</b> ZER33	<b>Swing</b> ZER32	<b>Dance</b> ZER30	<b>Catapult</b> ZER28	<b>Sport</b> ZER27

Visit [www.camirafabrics.com](http://www.camirafabrics.com) to view the full range of colors available in each pattern.  
Photographic fabric scans are not color accurate. Always request actual fabric samples before ordering.



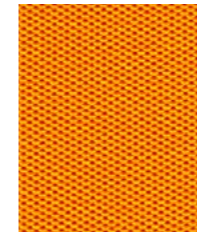
Inspired by sportswear, RePlay Zero fuses the flexibility of a trainer with the performance of an athlete. A knitted appearance in a woven fabric, together with two-tone micro color detail, creates a futuristic look that is straight out of the sports arena, onto furniture. Made from 100% post-consumer recycled polyester and TCPP free, RePlay Zero is future thinking, forward moving, and environmentally intelligent.



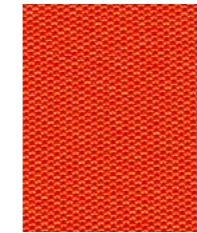
Recycled Polyester  
from Plastic Bottles



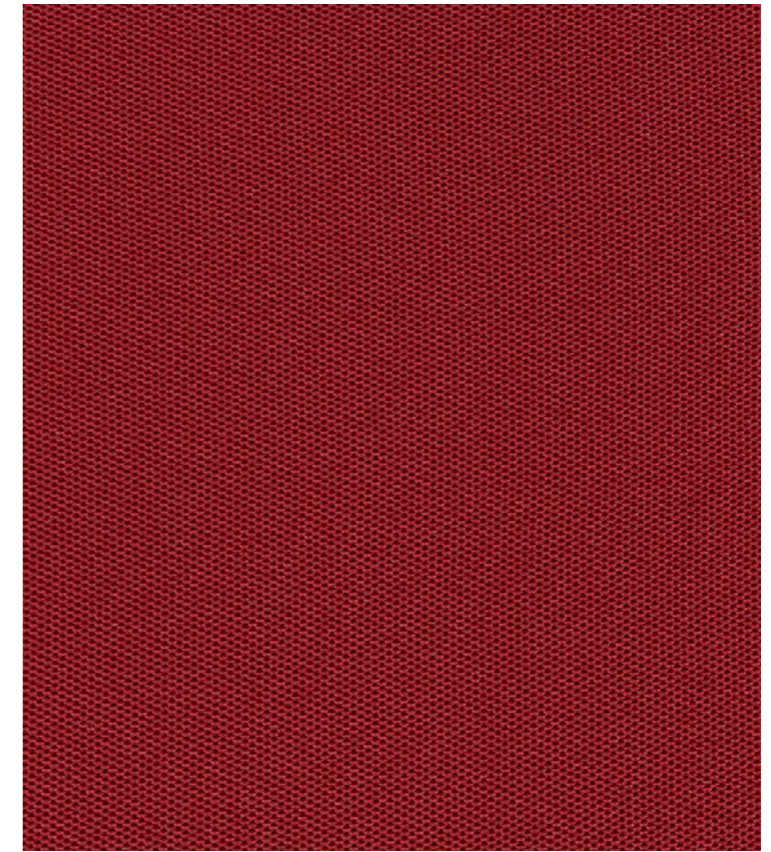
Sprint is a classic stretch knit product with a smooth macro cellular construction and a classic design that will stand the test of time. Sprint has multi-directional stretch for excellent upholsterability on task chair bases and backs.



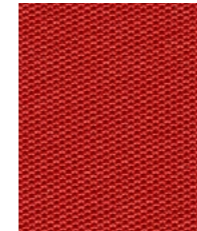
**Gold**  
PS015



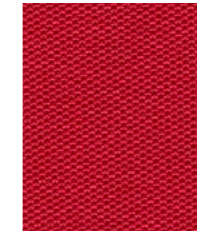
**Plunge**  
PS016



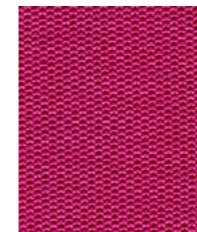
**Finish**  
PS011



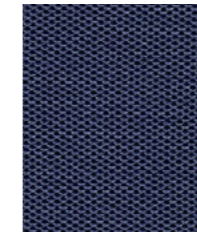
**Start**  
PS010



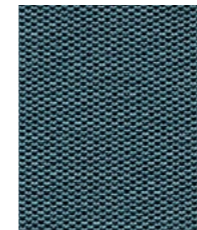
**Runner**  
PS017



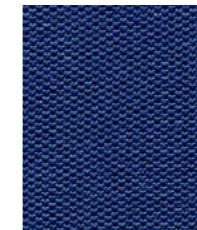
**Ready**  
PS018



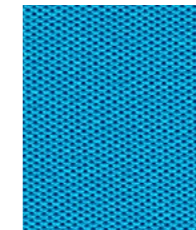
**Line**  
PS033



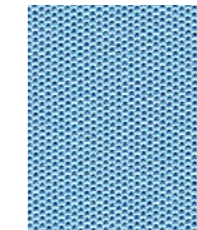
**Competitor**  
PS040



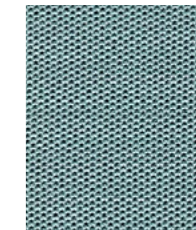
**Heat**  
PS038



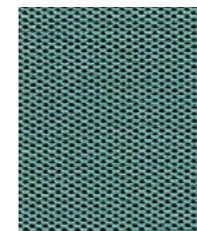
**Victory**  
PS032



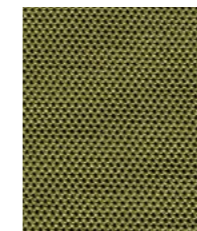
**Stretch**  
PS031



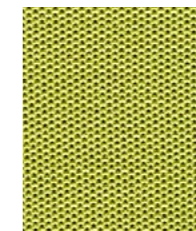
**Nutrition**  
PS039



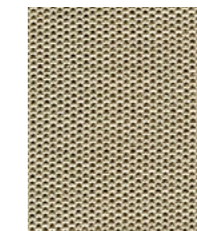
**Champion**  
PS041



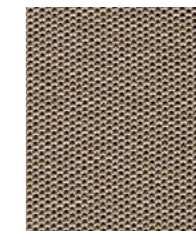
**Train**  
PS027



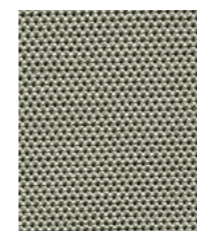
**Energy**  
PS026



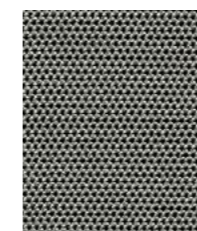
**Hurdle**  
PS0001



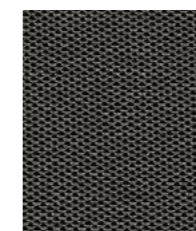
**Relay**  
PS002



**Silver**  
PS028



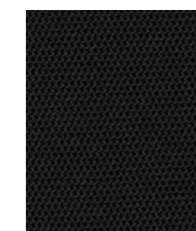
**Block**  
PS029



**Speed**  
PS030



**Exercise**  
PS025



**Chase**  
PS004

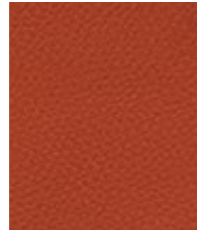
Visit [www.camirafabrics.com](http://www.camirafabrics.com) to view the full range of colors available in each pattern. Photographic fabric scans are not color accurate. Always request actual fabric samples before ordering.

# Port

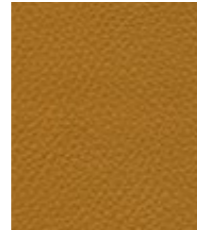
Order samples/View full collection



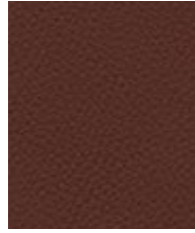
**Arcadia**  
POT20



**Ferrysburg**  
POT17



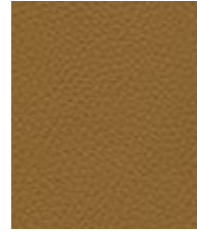
**Marquette**  
POT16



**Monroe**  
POT19



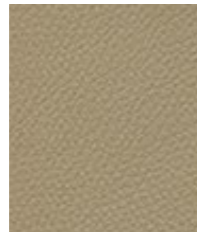
**Manitou**  
POT18



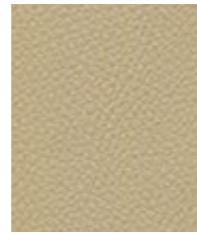
**Copper**  
POT13



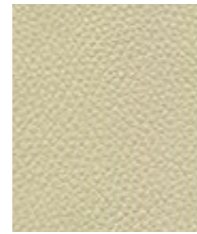
**Charlevoix**  
POT14



**Manistee**  
POT21



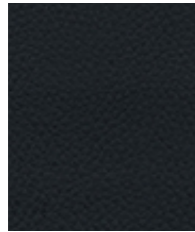
**Sagatuck**  
POT12



**Ludington**  
POT11



**Leland**  
POT01



**Alpena**  
POT10



**Bay**  
POT09



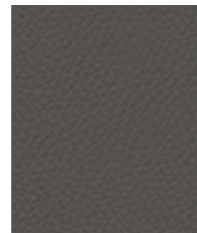
**Boyne**  
POT07



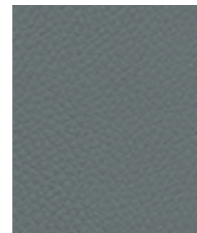
**Caseville**  
POT06



**Mackinaw**  
POT08



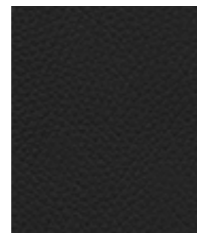
**Petoskey**  
POT15



**Pentwater**  
POT03



**Grayhaven**  
POT02



**Escanaba**  
POT04



**Isle Royale**  
POT05



**Cheboygan**  
POT22

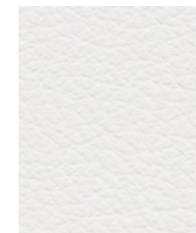
Port is a place of shelter, protection and sanctuary. Taking inspiration from well-known Michigan harbors, which provide a safe anchorage for weary sailors and vessels from rough waters and natural disasters. Similarly on furniture, it protects and upholds in high traffic areas, providing maximum durability. With a palette of 22 soft neutrals and muted tones, Port is the perfect environmentally conscious phthalate free vinyl to help create a positive impact on any interior space.



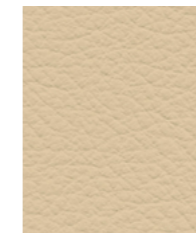
Vintage is an exquisitely soft natural leather from Western European bull hide stock. This stylish product with a pigmented grain-effect finish is virtually maintenance free, with a water based sealant for added protection.

## Vintage

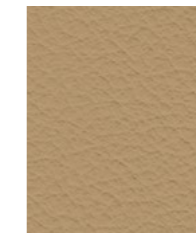
[Order Samples/View full collection](#)



**Sprite**  
VIN50



**Pinto**  
VIN22



**Limousine**  
VIN06



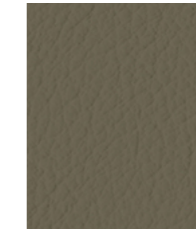
**Novel**  
VIN97



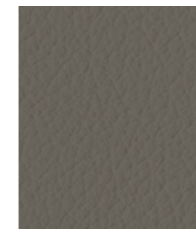
**Javelin**  
VIN56



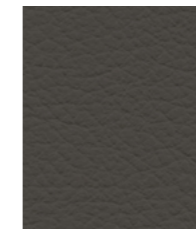
**Innovate**  
VIN93



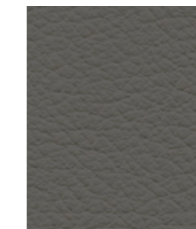
**Maybach**  
VIN58



**Rambler**  
VIN23



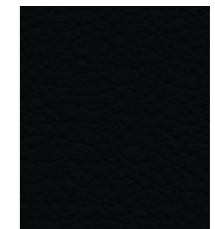
**Lincoln**  
VIN27



**Cache**  
VIN96



**Silver Shadow**  
VIN02



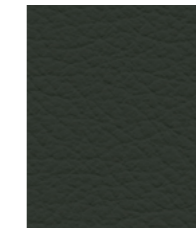
**Seraph**  
VIN01



**Cobra**  
VIN85



**Acura**  
VIN86



**Connaught**  
VIN07



**Royce**  
VIN24



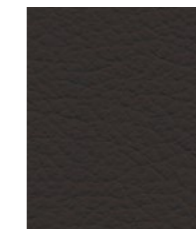
**Spyder**  
VIN28



**Thunderbird**  
VIN51



**Bugatti**  
VIN84



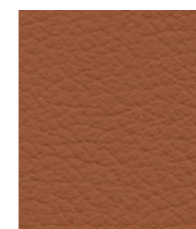
**Aston**  
VIN18



**Stag**  
VIN38



**Carmague**  
VIN12



**Cursor**  
VIN53



**Phantom**  
VIN10



**Media**  
VIN98



**Pontiac**  
VIN71



**Morgan**  
VIN46

Visit [www.camirafabrics.com](http://www.camirafabrics.com) to view the full range of colors available in each pattern.

Photographic fabric scans are not color accurate. Always request actual fabric samples before ordering.

# Blazer

## Composition

100% Pure New Wool

## Environmental

Certified to the EU Ecolabel  
Certified to Indoor Advantage™ Gold  
Environmental Product Declaration -  
Natural fabric  
AB 2998 Compliant  
Prop 65 Compliant  
PFAS Free  
Non metallic dyestuffs

## Width

54 inches minimum

## Abrasion Resistance\*

ASTM D4157 Wyzenbeek method  
Heavy Duty Upholstery independently  
certified to  $\geq 75,000$  double rubs. Covered by  
a full and comprehensive 10 year guarantee  
(full details available)

## Flammability

California Technical Bulletin 117  
NFPA 260 + UFAC Class 1  
BS 7176 Low Hazard  
ASTM E84 Class 1 or A (Adhered)  
ASTM E84 Class 1 or A (Un-adhered)  
IMO FTP Code (Part 8)  
**Optional, please specify when ordering:**  
NFPA 701 when FR treated  
BS 7176 Medium Hazard when FR treated  
*Note: Flammability performance is dependent  
on components used.*

## Cleaning code

W/S  
Clean with water-based cleaning agent or  
solvent: Depending on the stain, you can use  
a dry-cleaning solvent, the foam of a mild  
detergent, or upholstery shampoo.

# Quest

## Composition

100% Post Consumer Recycled Polyester,  
including 75% SEAQUAL® YARN

## Environmental

Certified to the EU Ecolabel  
Certified to Standard 100 by OEKO-TEX®  
Certified to Indoor Advantage™ Gold  
AB 2998 Compliant  
Prop 65 Compliant  
PFAS Free  
Made from 100% post-consumer recycled  
polyester  
Non metallic dyestuffs

## Width

54 inches minimum

## Abrasion Resistance\*

ASTM D4157 Wyzenbeek method  
Heavy Duty Upholstery independently  
certified to  $\geq 100,000$  double rubs  
Covered by a full and comprehensive 10 year  
guarantee (full details available)

## Flammability

California Technical Bulletin 117  
NFPA 260 + UFAC Class 1  
BS 7176 Low Hazard  
ASTM E84 Class 1 or A (Adhered)  
ASTM E84 Class 1 or A (Un-adhered)  
**Optional:** Please specify when ordering:  
NFPA 701 when FR treated (Gorts)  
BS 7176 Medium Hazard when Eco FR  
treated  
IMO FTP Code (Part 8) when Eco FR treated  
*Note: Flammability performance is dependent  
on components used.*

## Cleaning code

W/S Vacuum regularly. Wipe with a damp  
cloth using a proprietary upholstery shampoo/  
soap. For deeper cleaning use steam, bleach,  
alcohol or professionally dry clean. Can be  
washed at 140F. Full details can be found in  
our cleaning and disinfection guide.

# Era

## Composition

100% Polyester

## Environmental

Certified to Standard 100 by OEKO-TEX®  
Certified to Indoor Advantage™ Gold  
Environmental Product Declaration -  
Synthetic fabric composition  
AB 2998 Compliant  
Prop 65 Compliant  
PFAS Free  
Non metallic dyestuffs

## Width

54 inches minimum

## Abrasion Resistance\*

ASTM D4157 Wyzenbeek method  
Heavy Duty Upholstery independently  
certified to  $\geq 100,000$  double rubs  
Covered by a full and comprehensive 10 year  
guarantee (full details available)

## Flammability

California Technical Bulletin 117  
NFPA 260 + UFAC Class 1  
BS 7176 Low Hazard  
ASTM E84 Class 1 or A (Adhered)  
ASTM E84 Class 1 or A (Un-adhered)  
UL 723  
**Optional:** Please specify when ordering:  
NFPA 701 when FR treated (Gorts)  
BS 7176 Medium Hazard when Eco FR  
treated  
IMO FTP Code (Part 8) when Eco FR treated  
*Note: Flammability performance is dependent  
on components used.*

## Cleaning code

W/S Vacuum regularly. Wipe with a damp  
cloth using a proprietary upholstery  
shampoo/soap. For deeper cleaning use  
steam, bleach, alcohol or professionally dry  
clean. Can be washed at 140F. Full details

# RePlay Zero

## Composition

100% Post Consumer Recycled Polyester

## Environmental

Certified to the EU Ecolabel  
Certified to Standard 100 by OEKO-TEX®  
Certified to Indoor Advantage™ Gold  
AB 2998 Compliant  
Prop 65 Compliant  
PFAS Free  
Made from 100% post-consumer recycled  
polyester  
Non metallic dyestuffs

## Width

54 inches minimum

## Abrasion Resistance\*

ASTM D4157 Wyzenbeek method  
Heavy Duty Upholstery independently  
certified to  $\geq 100,000$  double rubs  
Covered by a full and comprehensive 10 year  
guarantee (full details available)

## Flammability

California Technical Bulletin 117  
NFPA 260 + UFAC Class 1  
BS 7176 Low Hazard  
ASTM E84 Class 2 or B (Adhered)  
ASTM E84 Class 1 or A (Un-adhered)  
**Optional:** Please specify when ordering:  
NFPA 701 when FR treated (Gorts)  
*Note: Flammability performance is dependent  
on components used.*

## Cleaning code

W/S Vacuum regularly. Wipe with a damp  
cloth using a proprietary upholstery shampoo/  
soap. For deeper cleaning use steam, bleach,  
alcohol or professionally dry clean. Can be  
washed at 140F. Full details can be found in  
our cleaning and disinfection guide.

# Oceanic

## Composition

100% Post Consumer Recycled Polyester,  
including 50% SEAQUAL® YARN

## Environmental

Certified to the EU Ecolabel  
Certified to Standard 100 by OEKO-TEX®  
Certified to Indoor Advantage™ Gold  
Environmental Product Declaration -  
Synthetic fabric composition  
AB 2998 Compliant  
Prop 65 Compliant  
PFAS Free  
Made from 100% post-consumer recycled  
polyester  
Non metallic dyestuffs

## Width

54 inches minimum

## Abrasion Resistance\*

ASTM D4157 Wyzenbeek method  
Heavy Duty Upholstery independently  
certified to  $\geq 100,000$  double rubs  
Covered by a full and comprehensive 10 year  
guarantee (full details available)

## Flammability

California Technical Bulletin 117  
NFPA 260 + UFAC Class 1  
BS 7176 Low Hazard  
ASTM E84 Class 1 or A (Un-adhered)  
**Optional:** Please specify when ordering:  
NFPA 701 when FR treated (Gorts)  
BS 7176 Medium Hazard when Eco FR  
treated  
IMO FTP Code (Part 8) when Eco FR treated  
*Note: Flammability performance is dependent  
on components used.*

## Cleaning code

W/S Vacuum regularly. Wipe with a damp  
cloth using a proprietary upholstery  
shampoo/soap. For deeper cleaning use  
steam, bleach, alcohol or professionally dry  
clean. Can be washed at 140F. Full details

# Sprint

## Composition

100% Polyester

## Environmental

Certified to Indoor Advantage™ Gold  
AB 2998 Compliant  
Prop 65 Compliant  
PFAS Free  
Non metallic dyestuffs

## Width

59 inches minimum

## Abrasion Resistance\*

ASTM D4157 Wyzenbeek method  
Heavy Duty Upholstery independently  
certified to  $\geq 100,000$  double rubs  
Covered by a full and comprehensive 10 year  
guarantee (full details available)

## Flammability

California Technical Bulletin 117  
NFPA 260 + UFAC Class 1  
BS 7176 Low Hazard  
*Note: Flammability performance is dependent  
on components used.*

## Cleaning code

W/S Vacuum regularly. Wipe with a damp  
cloth using a proprietary upholstery shampoo/  
soap. For deeper cleaning use steam, bleach,  
alcohol or professionally dry clean. Can be  
washed at 140F. Full details can be found in  
our cleaning and disinfection guide.

# Port

## Composition

Face:  $\geq 99\%$  PVC,  $\leq 1\%$  PU  
Backing: 100% Polyester

## Environmental

AB 2998 Compliant  
Prop 65 Compliant  
PFAS Free  
Non Metallic Dyestuffs  
Phthalate Free

## Width

54 inches minimum

## Abrasion Resistance\*

ASTM D4157 Wyzenbeek method  
Heavy Duty Upholstery independently  
certified to  $\geq 100,000$  double rubs  
Covered by a full and comprehensive 5 year  
guarantee (full details available)

## Flammability

California Technical Bulletin 117  
NFPA 260 + UFAC Class 1  
*Note: Flammability performance is dependent  
on components used.*

## Cleaning code

W Vacuum regularly. Wipe with a damp  
cloth using mild detergent or non-solvent  
upholstery shampoo. For deeper cleaning  
use bleach. Full details can be found in our  
cleaning and disinfection guide.

# Vintage

## Composition

100% Leather

## Environmental

AB 2998 Compliant  
Prop 65 Compliant  
PFAS Free

## Width

Hide Size 53.8 - 64.5ft<sup>2</sup>

## Abrasion Resistance\*

ASTM D4157 Wyzenbeek method  
Heavy Duty Upholstery independently  
certified to  $\geq 100,000$  double rubs  
Covered by a full and comprehensive 5 year  
guarantee (full details available)

## Flammability

California Technical Bulletin 117  
NFPA 260 + UFAC Class 1  
BS 7176 Low Hazard  
*Note: Flammability performance is dependent  
on components used.*

## Cleaning code

W Spot clean, using the foam only from a  
water-based cleaning agent, such as a mild  
detergent or non-solvent upholstery shampoo  
product. Full details can be found in our  
cleaning and disinfection guide.

\*Abrasion test results exceeding ACT performance Guidelines are not an indicator of product lifespan. Multiple factors affect fabric durability and appearance retention. We're confident in the durability of our products so we provide a robust 10 year guarantee, unless otherwise stated, (full details available). This product is externally certified, details of which are on our website and available from our customer services team.

Batch to batch variations in shade may occur within commercial tolerances. We reserve the right to alter technical specifications without notice. The Unregistered Design Rights and the Copyright in all designs are the exclusive property of Camira Fabrics Limited.

The stated technical and environmental performance of a fabric may be affected by the post treatment applied. Product guarantees for the post treatment of fabrics undertaken by Camira are guaranteed for 5 years.

# camira

For additional information or sample requests visit: [www.camirafabrics.com](http://www.camirafabrics.com)

Samples can also be requested by email at: [memos@camirafabrics.com](mailto:memos@camirafabrics.com)



Not applicable to Vintage.