



connect your story

OM5[®] Series Sales Tutorial

I. Body-Activated Motion

- The OM5's beauty is in the simplicity of its design. The chair adjusts to the user, instead of the other way around.
- Designed to respond to user's body weight without cumbersome tension knobs.
- The seat angle remains constant while the back angle opens, using a patented recline action pushing the user "uphill." This motion provides better circulation for the user.

The synchronized motion of the back and seat are balanced in perfect harmony

Lock the back into an upright position with the tilt lock knob for more focused work situations



The pivot point location extends upwards near the chair's arms, to mimic the natural pivot point in the human body, the hips

II. Variable Back Resistance

- Designed with a Virtual Lock (V-lock) system, sitting with your lower back all the way into the OM5 seat gives firm lumbar support.
- Because the user is perfectly balanced in every position, the OM5 allows for an effortless and comfortable Virtual Pause at any backrest angle.

Simple physics was designed into the backrest, to give you more or less support when needed



• **Mobility Zone:** with more leverage, lean your shoulders into the backrest to easily recline at any time

Stability Zone: with less leverage on the lower half of the backrest, the Virtual Lock holds the user upright

III. Additional New Features & Ergonomic Adjustments

- The new lumbar adjustment feature of the chair allows for a highly personalized fit, thanks to its bi-lateral variable adjustment that enables users to control the pressure on either side of the lumbar spine. This innovation goes beyond the standard lumbar pads typically found in task chairs, enhancing comfort during extended use.
- The removable, tool-free seat allows for easy replacement, extending the chair's life by refreshing the cushion. It features a 2.5-inch depth adjustment for customizable support and a flexible waterfall to accommodate various seating positions, including perching.



Two mirrored leaf springs articulate independently for dynamic support and range of travel beyond most other static supports.

Both 2.5" of height adjustment in 5 distinct positions, and 0.5" depth adjustment.



Add up to an additional 2.5 inches up seat depth by easily moving the seat forward or back to desired position.



Easily extend the life of the chair. The seat is designed to be field-removable, enabling easy swapping by hand without the need for any tools.

IV. Technical Features

- Inspired by skateboard wheels and drawer hardware, the OM5 backrest and seat move effortlessly between upright and reclined positions.
- Designed with 5 wheels, which gives it the name OM5.



V. Model Variants

Midback PolyFlex

- Medium height backrest for a more low-profile chair size
- Polyflex slats curved to users back and lumbar shape, with gentle flexibility
- Optional back upholstery, lumbar and headrest

Highback

- Higher shape to keep frame from touching shoulders of the user
- Mesh tension designed for both support and flexibility
- Optional lumbar and headrest

Exec. High Back

- Executive height backrest for full support
- Polyflex slats curved to back and lumbar shape, with gentle flexibility
- Optional back upholstery, lumbar and headrest

Stool

- All three back designs available
- Optional lumbar and headrest



Model# OM5



Model# OM5-MH



Model# OM5-EX



Model# OM5-TS
With 8" Turn-lock Base Package

VI. Colors and Finishes

- Because OM5's beauty is in its simplicity, the color palette is also sophisticated and modern. Mix and match between Frame Color, PolyFlex Back Color and Base/Cylinder Packages.
- All frame colors have matching base options as well as a polished base.

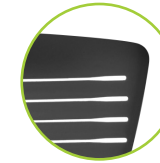
PolyFlex Back Colors



Arctic White



Cool Grey



Graphite



Modern Black

Frame Choices

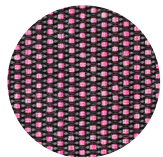


Polished Base

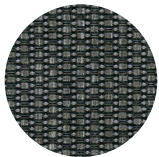
Base Choices

VII. Mesh Colors

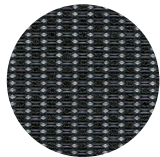
- Select from a vibrant palette of eight mesh colors. Two-tone weft yarns create a subtle heathered pattern, chosen to highlight depth of colors beyond a single-color specification.
- The weave design and pattern developed for special loom that produces a higher ends-per-inch than most standard mesh chairs. Allowing for less overall tension needed for lively support in all areas of the backrest.



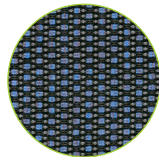
Berry Pink



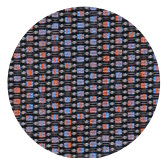
Charcoal Grey



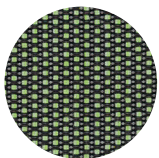
Midnight Black



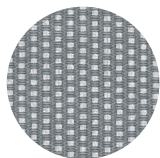
Geyser Blue



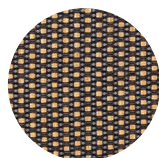
Palooza Purple



Matcha Green



Steel Grey



Warm Sand



VIII. Zodiac Mesh Overlay

- To add warmth onto the Midback and Highback Executive Polyflex backrest, choose Zodiac Mesh Overlay in one of eleven color options.
- Once permanently installed, it adds a level of comfort similar to a mesh back chair.



Gemini



Pisces



Scorpio



Aquarius



Taurus



Leo



Capricorn



Aries



Sagittarius



Libra



Back View



The PolyFlex is still visible from behind the chair, when the Zodiac is installed on the front

- A mesh-like breathable fabric with a thin cushioned under layer for added softness
- Exceeds 1,000,000 double rubs
- 100% polyester

IX. Selected Accessories

Upholstered Back



To add even more comfort, an upholstered back comes with .5" of High Resiliency (HR) Molded Foam

Also available with our Leather Program (LG1-3)

Coat Rack



Protect the shape and collar of your jacket with this simple wire form attachment. Please note that the headrest is not compatible with the coat rack

Deluxe Headrest



Upholstered pad slides 2" vertically

3-way adjustable headrest w/ leather-like upholstery (default)

Quick adjust locking mechanism

CFT Memory Foam Insert



If a bit more cushioning is needed, an added layer of memory foam can be inserted underneath the seat cushion

X. Arm Options

- Unlike other chairs, the OM5 arms are designed to move in unison with the seat sliding forward, as the back reclines. This keeps them at a perfect distance from the work surface.
- The 4.25" height adjustment range allows the user to position the arms for proper ergonomic use, or easily drop them down and out of the way when desired.
- All arm options can be made at a fixed height at 8.25" above the seat.



A-BK01, A-GR04

Height adjustable OM5 Arms with black or graphite arm pads.



A-RP45

5-way arm top with smooth fore-aft, side-side, and inward pivoting motion.



A-RP50

Black height adjustable with width adjustable, inward pivoting arm top.



A-RP65

6-way adjustable & lockable motion.



Armless



Height Adjustment



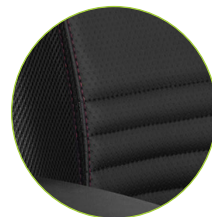
4.25" Travel Range

XI. Gaming

- OM5's ergonomic foundation leads to the best application of a gaming chair designed for long term use.
- Overt gamer chair aesthetics highlight the desire to play and win, before even sitting down.

Zodiac breathable fabric along sides of seat and back to help keep foam and gamer cool under pressure.

Innovative stipple pattern vinyl designed for marine application, to keep from overheating.



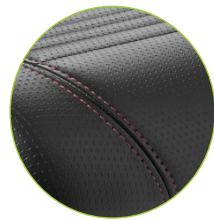
Embroidered headrest for added style

Accent panels near the shoulders and hips subtly showcase team colors and are visible while seated.



XII. Gaming (cont.)

Accent color vibrantly displayed through polyback slats



Matching contrast stitching shows great attention to detail.

Extra foam layer added to surface of back and seat add even more comfort over extended use.



Hollow casters provide a stylish upgrade.

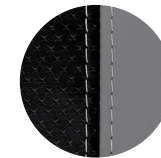
Accent Colors



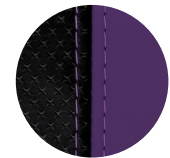
Dark Matter
3V00



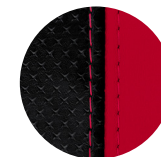
Antidote
3V10



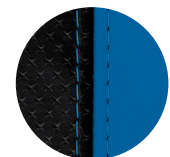
Fortitude
3V02



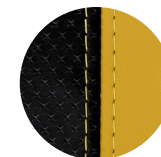
Elixir
3V09



Inferno
3V07



Mana
3V05



Rarity
3V06

Designed by Francisco Romero of Phidesign

Phidesign, founded in 2004, is a furniture design studio that specializes in high performance Task, Executive, and Guest seating for the commercial market. Led by industrial designer and engineer Francisco Romero, and Graphic Designer Nadine Bosshard Romero, they have carved a niche in value-driven markets by designing innovative products in a socially and economically responsible way.

Francisco received his Bachelor of Science degree in Applied Mathematics and then went on to receive his Master's degree in Architecture, both from UCLA.

Nadine studied at the famed Art Center College of Design in both Switzerland and Pasadena.

