



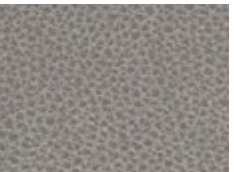
Kira (Grade E+15) field



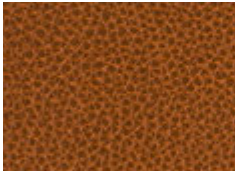
brown sugar



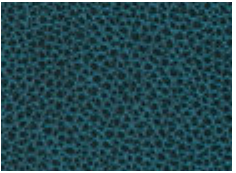
mist



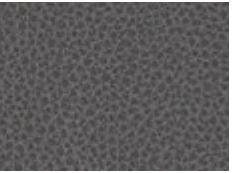
steel



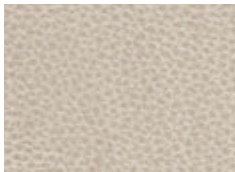
autumn



aquamarine



shale



chalk



latte



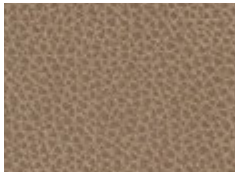
merlot



dark sky



cinder



fawn



earth



port



atlantic



Dakota (Grade E+15) lotion



linseed



antelope



chaps



saddle bag



mesquite



cordovan



moss



music



thunder



espresso



haze



scarlet



Brooklyn (Grade E) port



peacock



leaf



golden rod



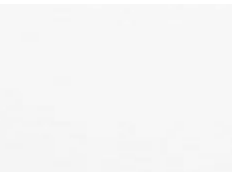
sea foam



moss



saddle



snow



metal



haze



hot pink



chocolate



ivory



ash



cadet



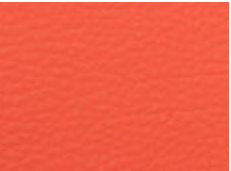
mulberry



malt



stone



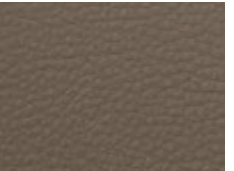
persimmon



ocean



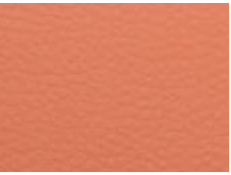
eggplant



khaki



new sand



penny



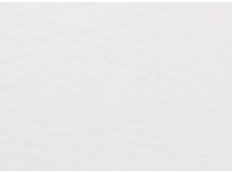
cobalt



raisin



espresso



mist



brick



ink



sunshine



black



pewter



jelly apple



celery

OM silicone | kira, dakota, brooklyn

Content: 100% Silicone Width: 54" Weight: 25.6 oz./yd. ±10% Backing: 100% Polyester Repeat: None Directional: No Railroaded: No		PERFORMANCE Grab Tensile ASTM D 751-06 Trap Tear ASTM D 751-06 Seam Strength ASTM D 751-06 Adhesion ASTM D 751-06 Stretch @ 15# (MD×CD) ASTM D 751-06 Flex Resistance ASTM D 2097 Blocking FTMS 191A-TM5872 Crock Resistance AATCC 8-2016 Wyzenbeek Abrasion ASTM D 4157-13 Colorfastness to Light ASTM D 4329-05 Colorfastness to Water: Sea AATCC 106-2013 Mildew Resistance ASTM G-21 Blue Dye Transfer Resistance LP-463KC-04-03 Biocompatibility - Vitro Cytotoxicity ISO 10993-5-2009 Biocompatibility - Irritation and Skin Sensitization ISO 10993-10-2010 Chemical Cleaner Resistance ANSI BIFMA HCF 8.1-2017 Sections 6 & 7 CFFA-6a Cold Crack (Roller Method) -40°F	TEST METHOD ASTM D 751-06 ASTM D 751-06 ASTM D 751-06 ASTM D 751-06 ASTM D 751-06 ASTM D 2097 FTMS 191A-TM5872 AATCC 8-2016 ASTM D 4157-13 ASTM D 4329-05 AATCC 106-2013 ASTM G-21 LP-463KC-04-03 ISO 10993-5-2009 ISO 10993-10-2010 ANSI BIFMA HCF 8.1-2017 Sections 6 & 7 CFFA-6a	RESULTS 200 lbs./in.× 200 lbs./in. min. 30 lbs./in. × 30 lbs./in. min. 90 lbs./in. × 90 lbs./in. min. 4 lbs./in. × 4 lbs./in. min. 14% × 25% 100,000 Cycles No. 1 - Pass Dry-5; Wet-5 200,000 cycles, #10 cotton duck 1,500 hours Shade-5; Staining-5 Pass Dry-4; Wet-3-4 Pass Pass Pass
Flammability* CA BULLETIN 117 2013, Section Bs5852 Crib 5 UFAC, Class 1 NFPA 260, Class 1 FMVSS #302 IMO A 652 (16)8.2 & 8.3	Pass Pass Pass Pass Pass Pass			
		Environmental 1. No solvents, polyvinyl chloride, plasticizers,phthalates, stabilizers, heavy metals or Bisphenol A 2. No persistent organic pollutants. No formaldehyde. No toxic by-products. 3. No chemical flame retardants 4. RoHS, REACH and LEED compliant 5. Passes CA 01350 VOC Emissions test		
		Cleaning code: WS Water/Solvent Cleaner Remove ordinary dirt and smudges with mild soap and water. Dry with a soft, lint-free cloth or towel. BC Bleach Cleanable A 5:1 ratio of water to bleach solution may be used as a disinfectant. Rinse the surface with clean water after disinfecting. Dry with a soft, lint-free cloth or towel.		

Additional Notes

Abrasion: Multiple factors affect fabric durability and appearance retention, including end-use application and proper maintenance. Wyzenbeek results above 100,000 double rubs have not been shown to be a reliable indicator of increased fabric lifespan. Manufacturers will always attempt to ship to a satisfactory commercial match. Because of industry standard dye lot variation, colors may not match exactly. Specifications are correct at time of printing and are subject to change without notification. Additional specifications may be available by contacting OM.



*This term and any corresponding data refer to typical performance in the tests indicated and should not be construed to imply the behavior of this or any other material under actual fire conditions.

Visit www.omseating.com for more information about ergonomics and the design of omseating.