

#### Fabric Disclaimer

Monitors and display settings vary widely between computers. As a result, all fabric colors shown here are approximate and subject to variance from the actual color on physical chairs. For more accurate ideas of color tones, etc. please contact your favorite OM representative to obtain a sample or fabric swatch.

## Architect, 5701 Gaudi

### Grade 5

**Content:** 100% Repreve PC Polyester

**Width:** Manufactured to dimension specifications

**Weight:** 16 oz./square yard

**Backing:** None

**Finish:** None

**Repeat:** None

**Directional:** Yes

**Railroaded:** No

**Abrasion:** Exceeds 250,000 Double Rubs

**Breaking Strength:** Warp 199.8 lbf. / Fill 243.5 lbf.

**Pilling Resistance:** Class 5

**Crocking:** Dry 1 / Wet 1

**Lightfastness:** 40 Hrs. - 1

**Waterfastness:** Class 5 for staining / Class 5 for shade color

**Flammability:** Passes California TB 117-2013; NFPA 260, CLASS 1; UFAC, CLASS 1

**Cleaning Code:** W

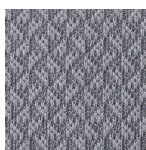
#### In Stock



5700  
Gehry



5701  
Gaudi



5702  
Kahn



5704  
Meier



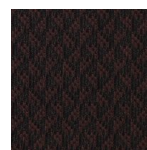
5705  
Pei



5706  
Yamasaki



5708  
Hadid



5709  
Wright