



## Clue, 2401 Sherlock

### Grade 2

**Content:** 79% Polyester, 21% Rayon

**Width:** 54"

**Weight:** 9.0oz./linear yard

**Backing:** 100% Polyester non-woven scrim

**Finish:** Soil and Stain Repellent

**Repeat:** No

**Abrasion:** 70,000 cycles

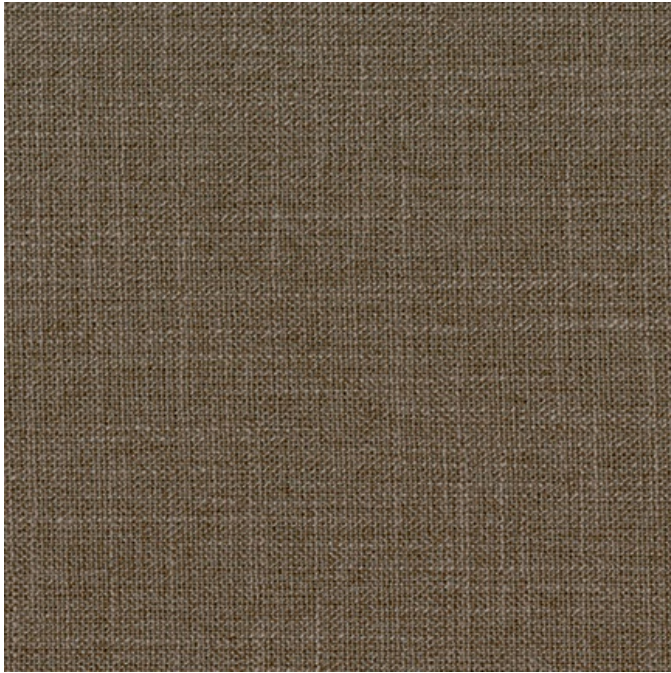
**Breaking Strength:** Warp 152 lbs. / Fill 116 lbs.

**Crocking:** Dry Class 4 / Wet Class 4

**Lightfastness:** 40 Hrs. - Class 4

**Flammability:** Passes California TB 117-2013; NFPA 260, CLASS 1; UFAC, CLASS 1

**Cleaning Code:** W



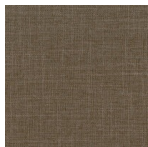
#### Fabric Disclaimer

Monitors and display settings vary widely between computers. As a result, all fabric colors shown here are approximate and subject to variance from the actual color on physical chairs. For more accurate ideas of color tones, etc. please contact your favorite OM representative to obtain a sample or fabric swatch.

#### In Stock



2400  
Spade



2401  
Sherlock



2402  
Marlowe



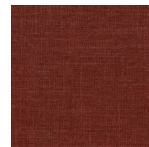
2403  
Tracy



2404  
Hardy



2406  
Drew



2407  
Clouseau



2408  
Friday



2409  
Agatha