

**Fabric Disclaimer**

Monitors and display settings vary widely between computers. As a result, all fabric colors shown here are approximate and subject to variance from the actual color on physical chairs. For more accurate ideas of color tones, etc. please contact your favorite OM representative to obtain a sample or fabric swatch.

**Basic 2.0, 1032 Gray**

**Grade 1**

**Content:** 100% Polyolefin

**Width:** 54"

**Weight:** 18.0 oz./linear yard

**Backing:** Acrylic

**Finish:** Imperviseal

**Repeat:** None

**Directional:** No

**Railroaded:** No

**Abrasion:** 250,000 Double Rubs

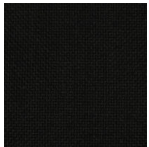
**Crocking:** Dry Class 5 / Wet Class 4.5

**Lightfastness:** 400 Hrs. - Class 5

**Flammability:** Passes California TB 117-2013; CS-191-53

**Cleaning Code:** WS

**In Stock**



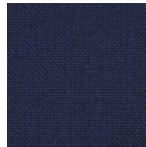
1030  
Black



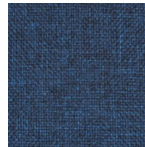
1031  
Charcoal



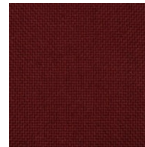
1032  
Gray



1034  
Navy



1035  
Blue



1039  
Burgundy