



## Basic, 1020 Black

### Grade 1

**Content:** 100% Marquesa Lana

**Width:** 54"

**Weight:** 16.0 oz./linear yard

**Backing:** Acrylic

**Finish:** Teflon

**Repeat:** None

**Directional:** No

**Railroaded:** No

**Abrasion:** 250,000 Double Rubs

**Breaking Strength:** Warp 300 lbs. / Fill 300 lbs.

**Crocking:** Dry Class 5 / Wet Class 5

**Lightfastness:** 400 Hrs. - Class 5

**Flammability:** Passes California TB 117-2013; CS-191-53

**Cleaning Code:** WS

#### Fabric Disclaimer

Monitors and display settings vary widely between computers. As a result, all fabric colors shown here are approximate and subject to variance from the actual color on physical chairs. For more accurate ideas of color tones, etc. please contact your favorite OM representative to obtain a sample or fabric swatch.

---

#### In Stock



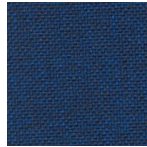
1001  
Charcoal



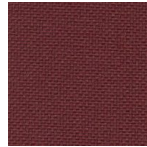
1002  
Gray



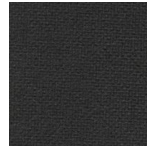
1004  
Navy



1005  
Blue



1013  
Burgundy



1020  
Black